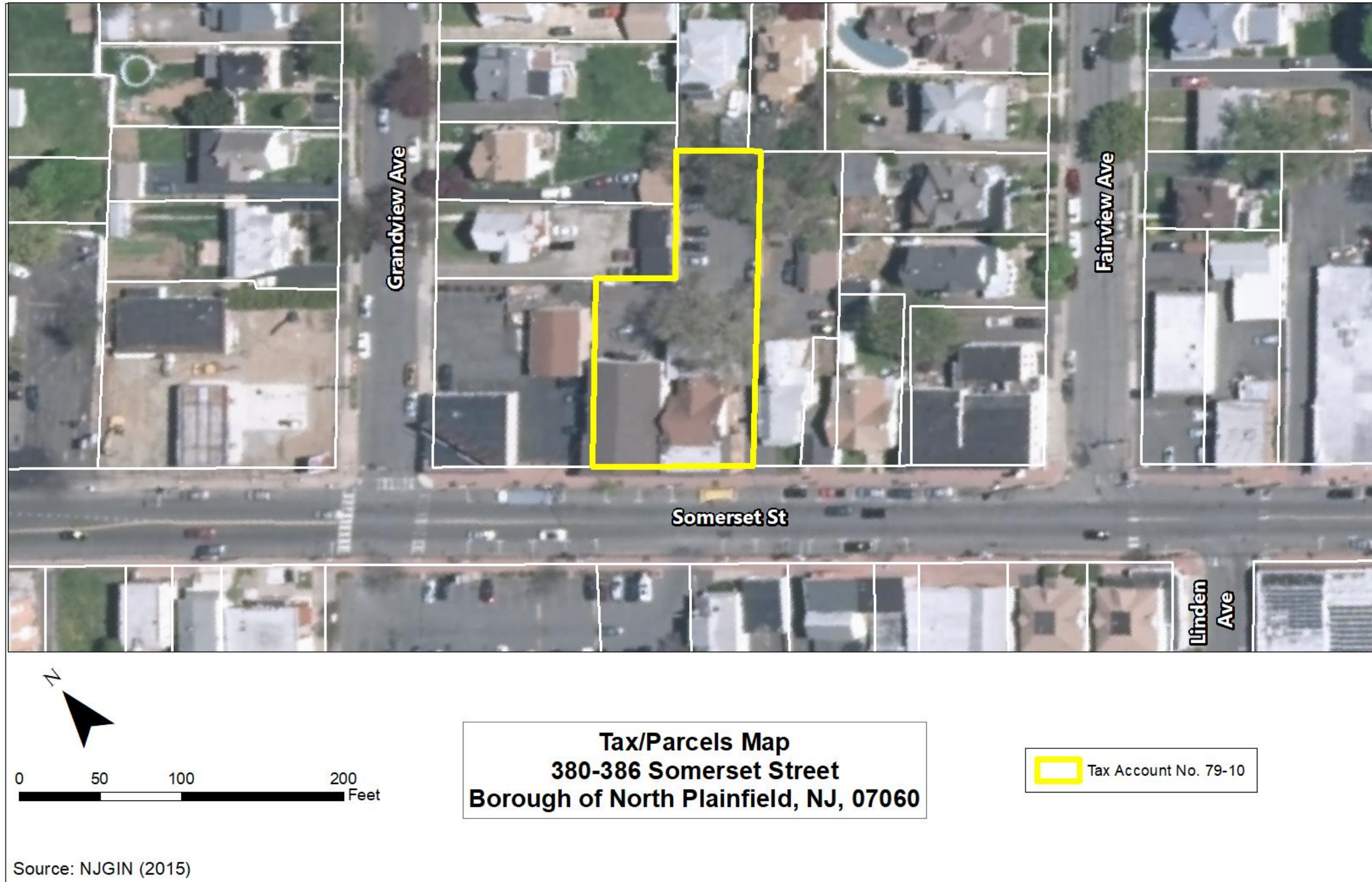
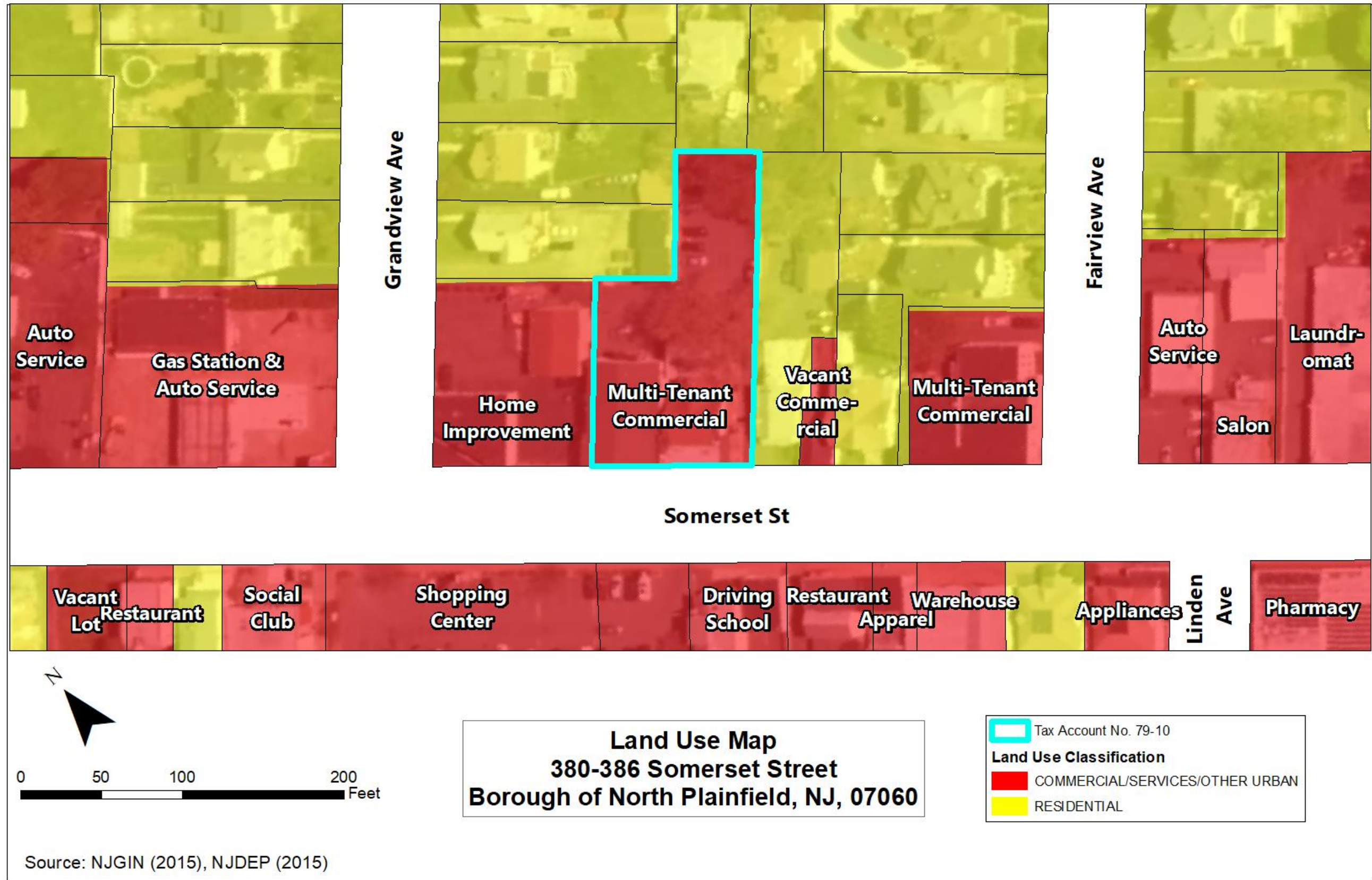
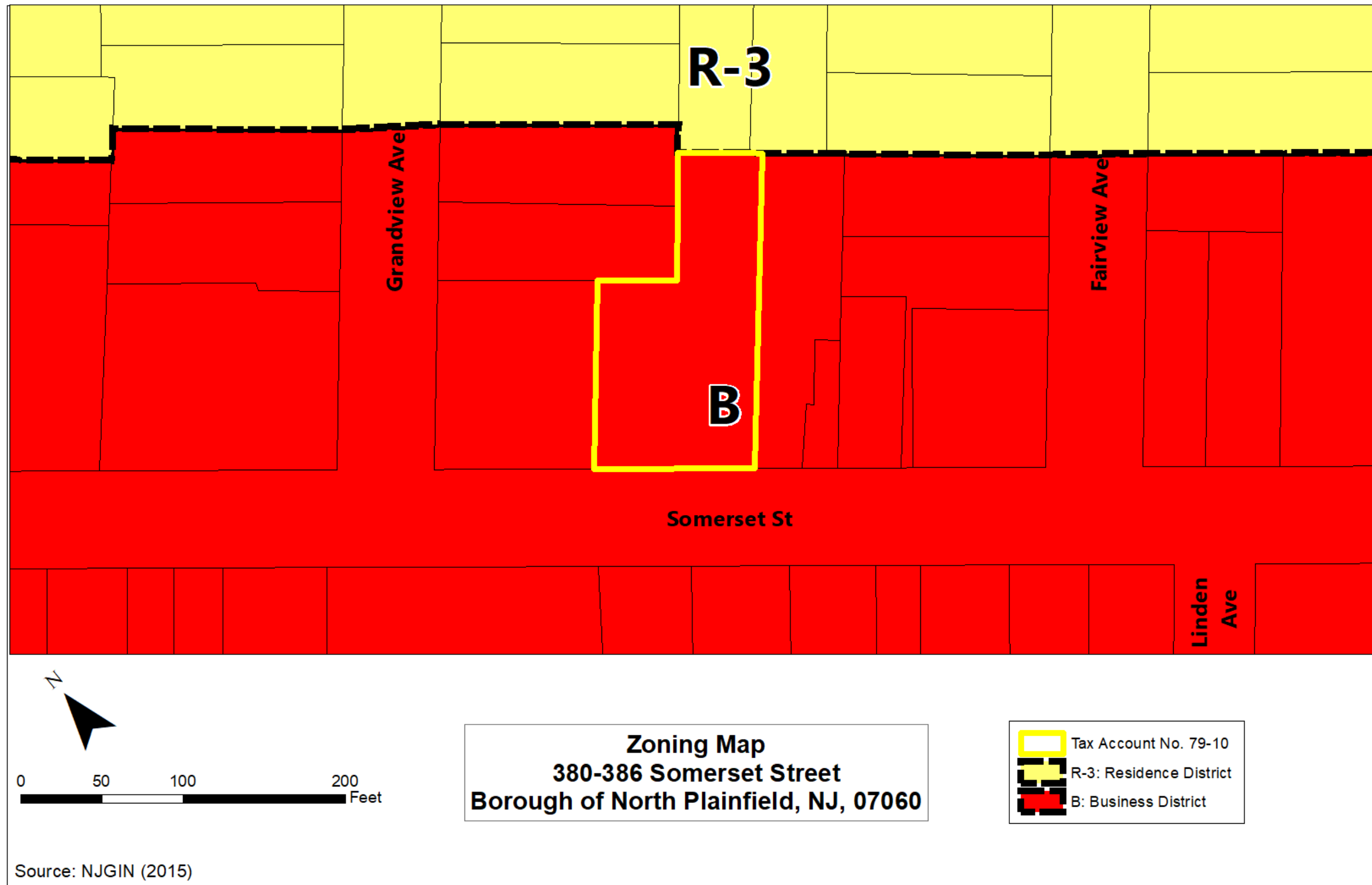


Tax/Parcels Map
380-386 Somerset Street
Borough of North Plainfield, NJ, 07060

Source: NJGIN (2015)









VIEW OF SUBJECT SITE FROM SOMERSET STREET
(TAKEN BY JOHN MCDONOUGH JULY 29, 2020)



VIEW OF SUBJECT SITE FROM SOMERSET STREET
(TAKEN BY JOHN MCDONOUGH JULY 29, 2020)



VIEW OF SUBJECT SITE FROM SOMERSET STREET
(TAKEN BY JOHN MCDONOUGH JULY 29, 2020)



VIEW OF SUBJECT SITE FRONTAGE ALONG SOMERSET STREET
(TAKEN BY JOHN MCDONOUGH JULY 29, 2020)



VIEW OF REAR PARKING AREA (NEW REFUSE ENCLOSURE PROPOSED)
(TAKEN BY JOHN MCDONOUGH JULY 29, 2020)



VIEW OF SUBJECT REAR PARKING AREA SCREENING
(TAKEN BY JOHN MCDONOUGH JULY 29, 2020)



VIEW OF SUBJECT REAR PARKING AREA SCREENING AND ADJACENT MASONRY SHED
(TAKEN BY JOHN MCDONOUGH JULY 29, 2020)



VIEW OF REAR PARKING AREA
(TAKEN BY JOHN MCDONOUGH JULY 29, 2020)



VIEW OF REAR PARKING AREA
(TAKEN BY JOHN MCDONOUGH JULY 29, 2020)



VIEW OF PEDESTRIAN-FRIENDLY, NICELY AMENITIZED AREA
(TAKEN BY JOHN MCDONOUGH JULY 29, 2020)



VIEW OF PEDESTRIAN-FRIENDLY, NICELY AMENITIZED AREA
(TAKEN BY JOHN MCDONOUGH JULY 29, 2020)



VIEW OF CONVENIENCE RETAIL AND SERVICES NEIGHBORING SUBJECT SITE
(TAKEN BY JOHN MCDONOUGH JULY 29, 2020)



VIEW OF RETAIL AND SERVICES NEIGHBORING SUBJECT SITE
(TAKEN BY JOHN MCDONOUGH JULY 29, 2020)



VIEW OF RESIDENTIAL USES NEIGHBORING SUBJECT SITE
(TAKEN BY JOHN MCDONOUGH JULY 29, 2020)



VIEW OF ONSTREET PARKING ON SOMERSET STREET
(TAKEN BY JOHN MCDONOUGH JULY 29, 2020)